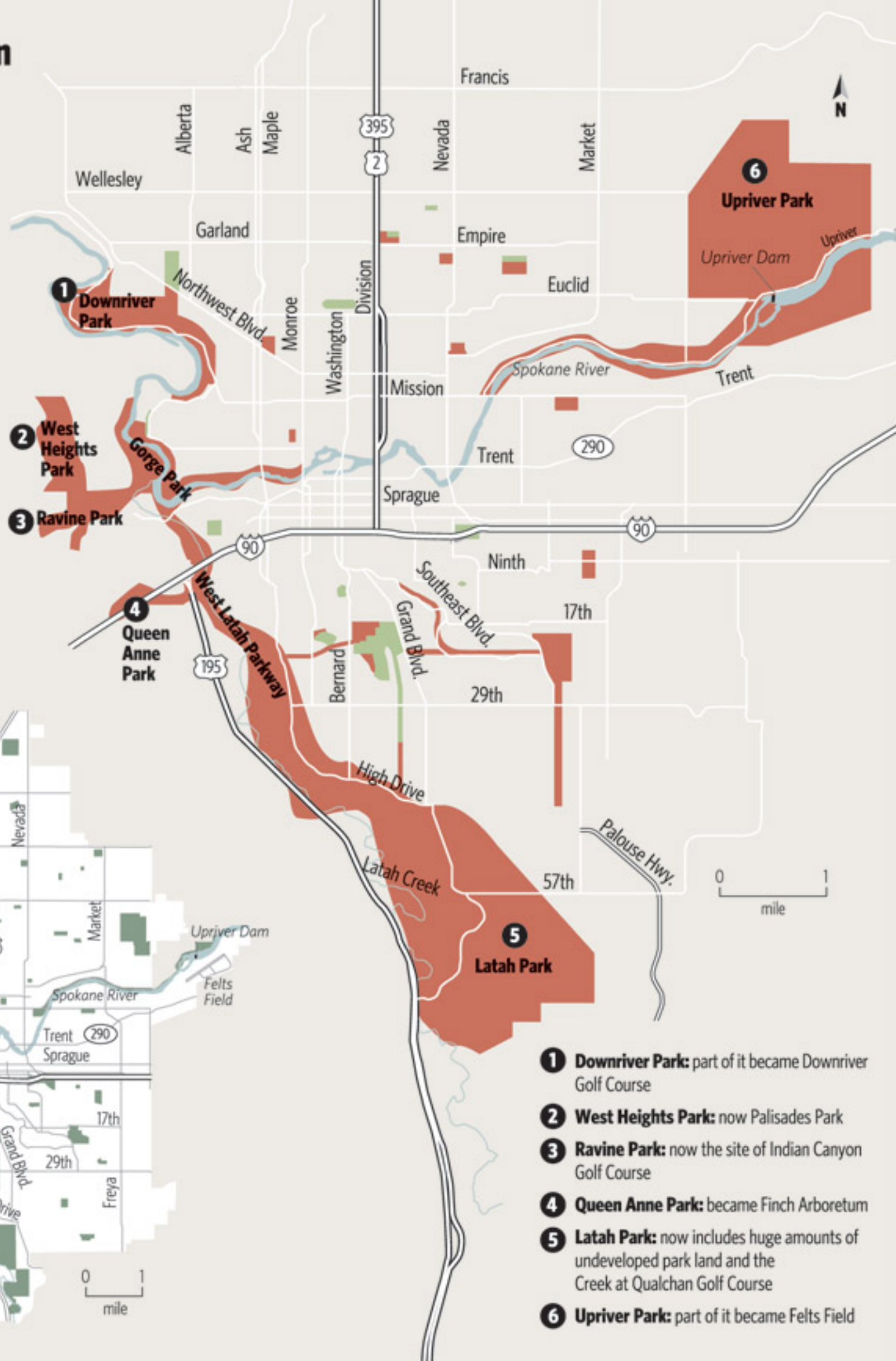


Olmsted's 1908 park plan

Following visits in 1907 and 1908, the Olmsted Brothers, America's most famous landscape architects, recommended increasing Spokane's parklands tenfold. This map, based on a 1908 map prepared by the Olmsteds and using today's streets for reference, shows the parks that existed in 1908 and the new parks proposed by the Olmsteds.

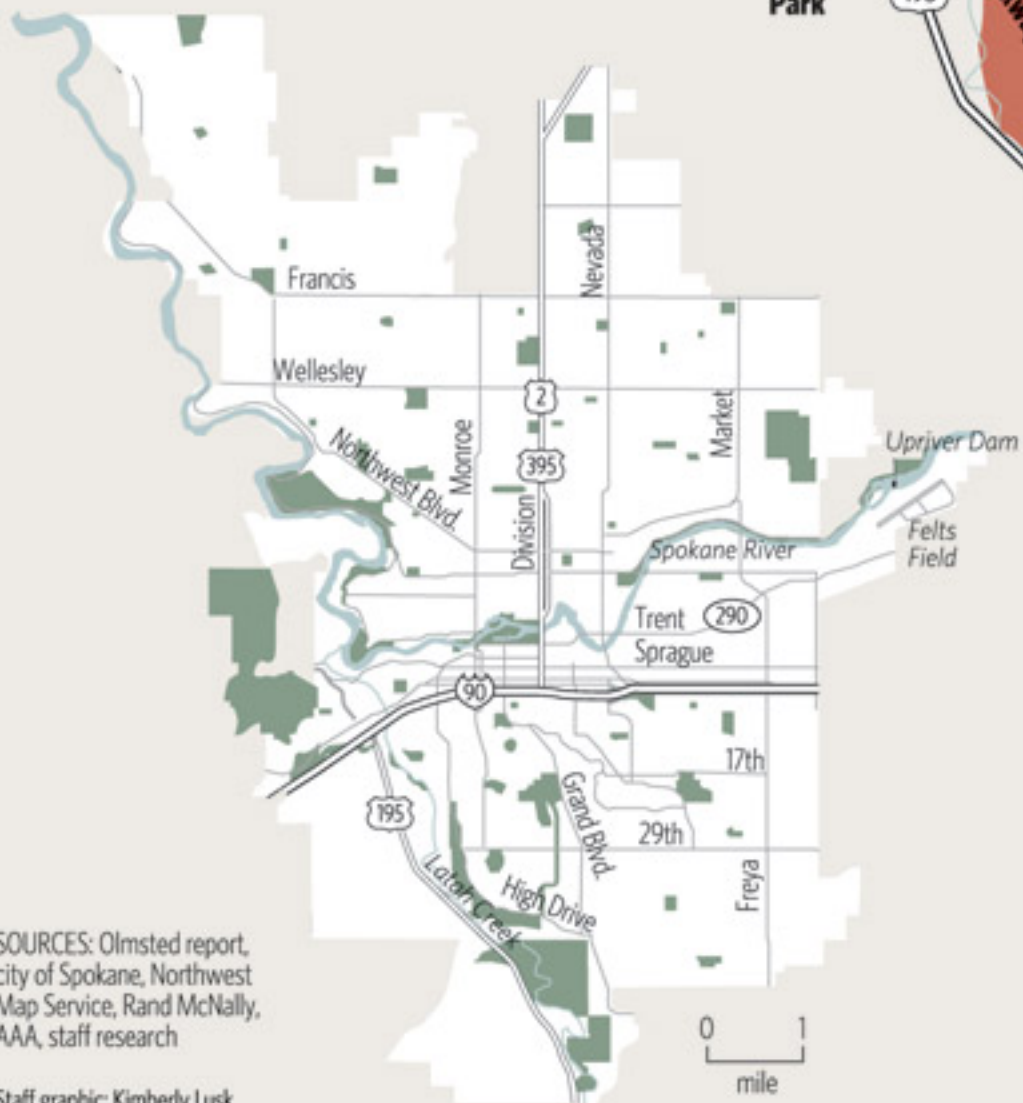
By 1913, the city had acquired most of the land recommended by the Olmsteds. Many of these parks still exist today; a number are now known by different names.

- Existing parks, 1908
- Park proposed by Olmsted report



Spokane parks, 2007

Today's park system includes a range of parks, including playgrounds, golf courses and natural areas.



- 1 Downriver Park:** part of it became Downriver Golf Course
- 2 West Heights Park:** now Palisades Park
- 3 Ravine Park:** now the site of Indian Canyon Golf Course
- 4 Queen Anne Park:** became Finch Arboretum
- 5 Latah Park:** now includes huge amounts of undeveloped park land and the Creek at Qualchan Golf Course
- 6 Upriver Park:** part of it became Felts Field

SOURCES: Olmsted report, city of Spokane, Northwest Map Service, Rand McNally, AAA, staff research

Staff graphic: Kimberly Lusk